

# Phospho-MAP2K2 (T394) Antibody



PACO06141

---

## Product Information

**Size:**

50ug

**Reactivity:**

Human, Mouse, Rat

**Source:**

Rabbit

**Isotype:**

IgG

**Applications:**

ELISA, WB, IHC, IP

**Recommended dilutions:**

ELISA:1:10000, WB:1:500-1:2000,  
IHC:1:100-1:300, IP:2-5ug

**Protein Background:**

**Gene ID:**

MAP2K2

**Uniprot**

P36507

**Synonyms:**

MAP2K2; MEK2; MKK2; PRKMK2; Dual specificity mitogen-activated protein kinase kinase 2; MAP kinase kinase 2; MAPKK 2; ERK activator kinase 2; MAPK/ERK kinase 2; MEK 2

**Immunogen:**

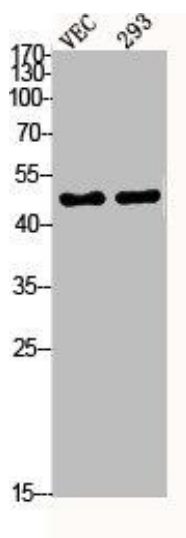
Synthesized peptide derived from human MEK-2 around the phosphorylation site of T394.

**Storage:**

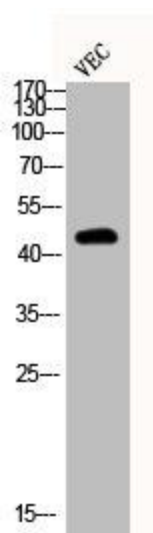
Liquid in PBS containing 50% glycerol, 0.5% BSA and 0.02% sodium azide.

## Product Images

---



Western Blot analysis of VEC 293 cells using Phospho-MEK-2 (T394) Polyclonal Antibody.



Western Blot analysis of VEC cells using Phospho-MEK-2 (T394) Polyclonal Antibody.