

Phospho-MTOR (S2448) Antibody



PACO06142

Product Information

Size:

50ug

Reactivity:

Human, Mouse, Rat

Source:

Rabbit

Isotype:

IgG

Applications:

ELISA, WB, IHC, IF

Recommended dilutions:

ELISA:1:40000, WB:1:500-1:2000,
IHC:1:100-1:300, IF:1:200-1:1000

Protein Background:**Gene ID:**

MTOR

Uniprot

P42345

Synonyms:

MTOR; FRAP; FRAP1; FRAP2; RAFT1; RAPT1; Serine/threonine-protein kinase mTOR; FK506-binding protein 12-rapamycin complex-associated protein 1; FKBP12-rapamycin complex-associated protein; Mammalian target of rapamycin; mTOR; Mechanistic tar

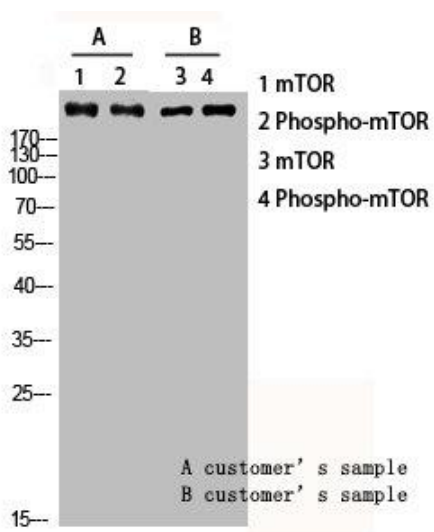
Immunogen:

Synthesized peptide derived from human mTOR around the phosphorylation site of S2448.

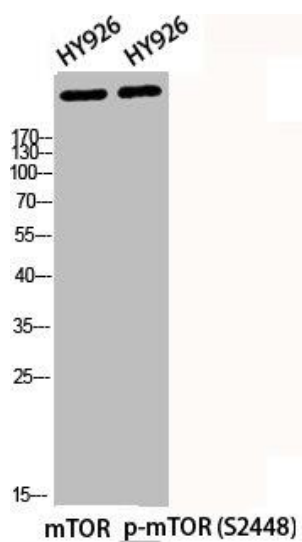
Storage:

Liquid in PBS containing 50% glycerol, 0.5% BSA and 0.02% sodium azide.

Product Images



Western blot analysis of customer's lysis using Phospho-mTOR (S2448) antibody.



Western Blot analysis of HY926 cells using Phospho-mTOR (S2448) Polyclonal Antibody.