

# Phospho-RPS6KB1 (T229) Antibody



PACO06147

---

## Product Information

**Size:**

50ug

**Reactivity:**

Human, Mouse, Rat

**Source:**

Rabbit

**Isotype:**

IgG

**Applications:**

ELISA, WB, IHC, IF

**Recommended dilutions:**

ELISA:1:5000, WB:1:500-1:2000, IHC:1:100-1:300, IF:1:200-1:1000

**Protein Background:****Gene ID:**

RPS6KB1

**Uniprot**

P23443

**Synonyms:**

RPS6KB1; STK14A; Ribosomal protein S6 kinase beta-1; S6K-beta-1; S6K1; 70 kDa ribosomal protein S6 kinase 1; P70S6K1; p70-S6K 1; Ribosomal protein S6 kinase I; Serine/threonine-protein kinase 14A; p70 ribosomal S6 kinase alpha; p70 S6 kinas

**Immunogen:**

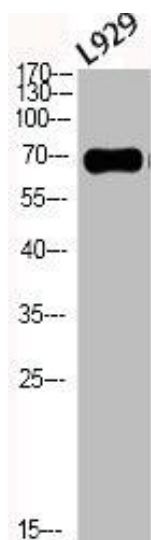
Synthesized peptide derived from human p70 S6 kinase &alpha; around the phosphorylation site of T229.

**Storage:**

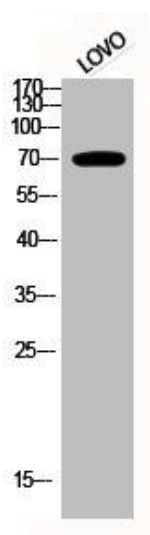
Liquid in PBS containing 50% glycerol, 0.5% BSA and 0.02% sodium azide.

## Product Images

---



Western Blot analysis of L929 cells using Phospho-p70 S6 kinase alpha (T229) Polyclonal Antibody.



Western Blot analysis of LOVO cells using Phospho-p70 S6 kinase alpha (T229) Polyclonal Antibody.