

Phospho-PRKCZ (T410) Antibody



PACO06149

Product Information

Size:

50ug

Reactivity:

Human, Mouse, Rat

Source:

Rabbit

Isotype:

IgG

Applications:

ELISA, WB, IHC, IF

Recommended dilutions:

ELISA:1:20000, WB:1:500-1:2000,
IHC:1:100-1:300, IF:1:200-1:1000

Protein Background:**Gene ID:**

PRKCZ

Uniprot

Q05513

Synonyms:

PRKCZ; PKC2; Protein kinase C zeta type; nPKC-zeta

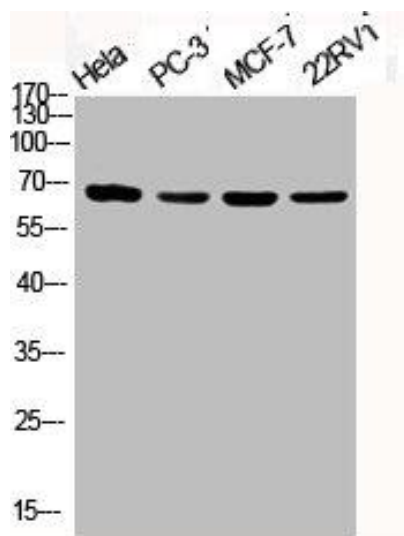
Immunogen:

Synthesized peptide derived from human PKC zeta around the phosphorylation site of T410.

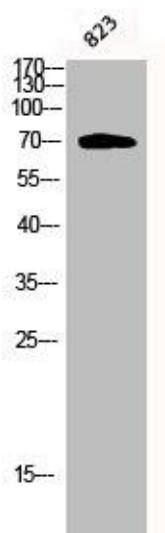
Storage:

Liquid in PBS containing 50% glycerol, 0.5% BSA and 0.02% sodium azide.

Product Images



Western Blot analysis of HELA PC3 MCF7 22RV1 cells using Phospho-PKC zeta (T410) Polyclonal Antibody.



Western Blot analysis of 823 cells using Phospho-PKC zeta (T410) Polyclonal Antibody.