

Phospho-RB1 (S780) Antibody



PACO06150

Product Information

Size:

50ug

Reactivity:

Human, Mouse, Rat

Source:

Rabbit

Isotype:

IgG

Applications:

ELISA, WB, IHC, IF

Recommended dilutions:

ELISA:1:10000, WB:1:500-1:2000,
IHC:1:100-1:300, IF:1:200-1:1000

Protein Background:**Gene ID:**

RB1

Uniprot

P06400

Synonyms:

RB1; Retinoblastoma-associated protein; p105-Rb; pRb; Rb; pp110

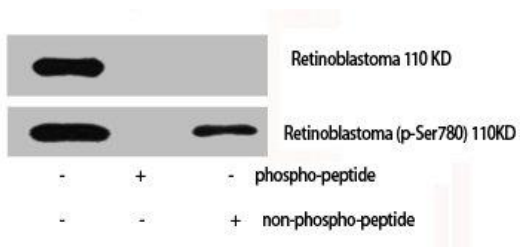
Immunogen:

Synthesized peptide derived from human Rb around the phosphorylation site of S780.

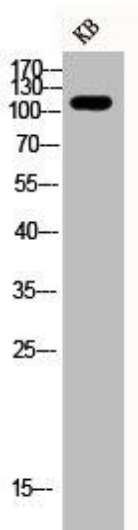
Storage:

Liquid in PBS containing 50% glycerol, 0.5% BSA and 0.02% sodium azide.

Product Images



Western Blot analysis of various cells using Phospho-Rb (S780) Polyclonal Antibody.



Western Blot analysis of KB cells using Phospho-Rb (S780) Polyclonal Antibody.