

# Phospho-STAT1 (Y701) Antibody



PACO06151

---

## Product Information

**Size:**

50ug

**Reactivity:**

Human, Mouse, Rat, Monkey

**Source:**

Rabbit

**Isotype:**

IgG

**Applications:**

ELISA, WB, IHC, IP

**Recommended dilutions:**

ELISA:1:10000, WB:1:500-1:2000,  
IHC:1:100-1:300, IP:2-5ug

**Protein Background:****Gene ID:**

STAT1

**Uniprot**

P42224

**Synonyms:**

STAT1; Signal transducer and activator of transcription 1-alpha/beta; Transcription factor ISGF-3 components p91/p84

**Immunogen:**

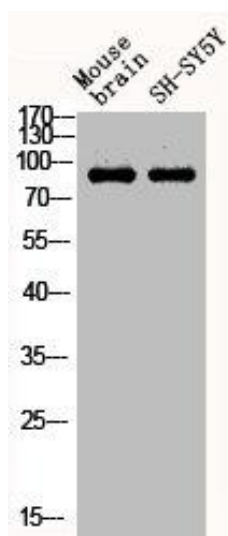
Synthesized peptide derived from human Stat1 around the phosphorylation site of Y701.

**Storage:**

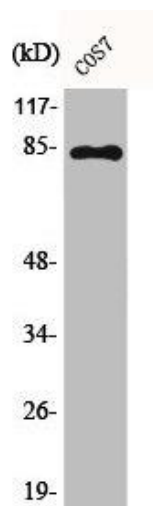
Liquid in PBS containing 50% glycerol, 0.5% BSA and 0.02% sodium azide.

## Product Images

---



Western Blot analysis of SH-SY5Y MOUSE-BRAIN cells using Phospho-Stat1 (Y701) Polyclonal Antibody.



Western Blot analysis of COS7 cells using Phospho-Stat1 (Y701) Polyclonal Antibody.