

# Phospho-MAPT (S396) Antibody



PACO06154

---

## Product Information

**Size:**

50ug

**Reactivity:**

Human, Mouse, Rat

**Source:**

Rabbit

**Isotype:**

IgG

**Applications:**

ELISA, WB

**Recommended dilutions:**

ELISA:1:20000, WB:1:500-1:2000

**Protein Background:****Gene ID:**

MAPT

**Uniprot**

P10636

**Synonyms:**

MAPT; MAPTL; MTBT1; TAU; Microtubule-associated protein tau; Neurofibrillary tangle protein; Paired helical filament-tau; PHF-tau

**Immunogen:**

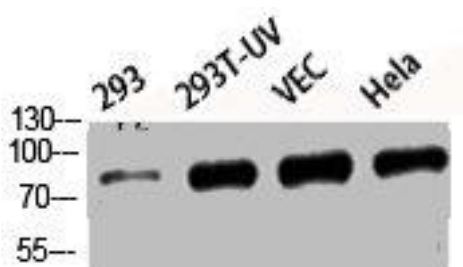
Synthesized peptide derived from human Tau around the phosphorylation site of S396.

**Storage:**

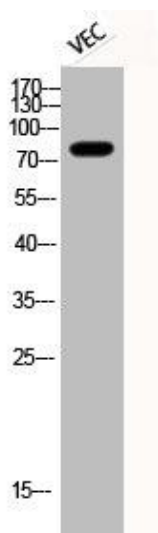
Liquid in PBS containing 50% glycerol, 0.5% BSA and 0.02% sodium azide.

## Product Images

---



Western Blot analysis of 293 293T-UV VEC HELA cells using Phospho-Tau (S396) Polyclonal Antibody.



Western Blot analysis of VEC cells using Phospho-Tau (S396) Polyclonal Antibody.