

**Phospho-CAMK2A/CAMK2B/CAMK2D (T305)
Antibody
PACO06155**



Product Information

Size:

50ug

Reactivity:

Human, Mouse, Rat

Source:

Rabbit

Isotype:

IgG

Applications:

ELISA, WB, IHC

Recommended dilutions:

ELISA:1:5000, WB:1:500-1:2000, IHC:1:100-1:300

Protein Background:

Gene ID:

CAMK2A/CAMK2B/CAMK2D

Uniprot

Q9UQM7/Q13554/Q13557

Synonyms:

CAMK2A; CAMKA; KIAA0968; Calcium/calmodulin-dependent protein kinase type II subunit alpha; CaM kinase II subunit alpha; CaMK-II subunit alpha; CAMK2B; CAM2; CAMK2; CAMKB; Calcium/calmodulin-dependent protein kinase type II subunit beta; Ca

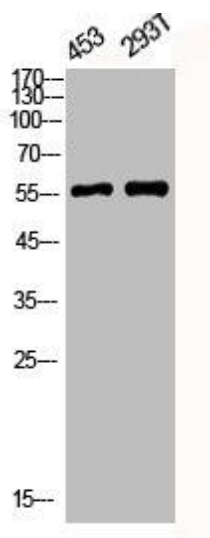
Immunogen:

Synthesized peptide derived from human CaMKII α ; / β ; / δ around the phosphorylation site of T305.

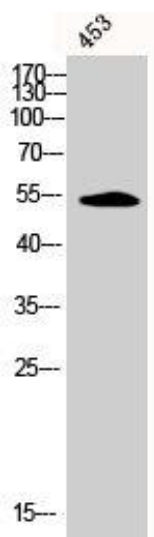
Storage:

Liquid in PBS containing 50% glycerol, 0.5% BSA and 0.02% sodium azide.

Product Images



Western Blot analysis of 453 293T cells using Phospho-CaMKII alpha / beta / delta (T305) Polyclonal Antibody.



Western Blot analysis of 453 cells using Phospho-CaMKIIalpha / beta / delta (T305) Polyclonal Antibody.