

Phospho-SMAD2/SMAD3 (T8) Antibody



PACO06165

Product Information

Size:

50ug

Reactivity:

Human, Mouse, Rat

Source:

Rabbit

Isotype:

IgG

Applications:

ELISA, WB

Recommended dilutions:

ELISA:1:10000, WB:1:500-1:2000

Protein Background:**Gene ID:**

SMAD2/SMAD3

Uniprot

Q15796/P84022

Synonyms:

SMAD2; MADH2; MADR2; Mothers against decapentaplegic homolog 2; MAD homolog 2; Mothers against DPP homolog 2; JV18-1; Mad-related protein 2; hMAD-2; SMAD family member 2; SMAD 2; Smad2; hSMAD2; SMAD3; MADH3; Mothers against decapentaplegic

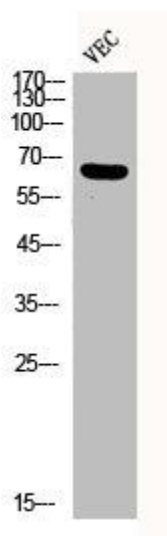
Immunogen:

Synthesized peptide derived from human Smad2/3 around the phosphorylation site of T8.

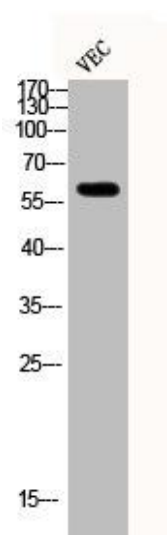
Storage:

Liquid in PBS containing 50% glycerol, 0.5% BSA and 0.02% sodium azide.

Product Images



Western Blot analysis of VEC cells using Phospho-Smad2/3 (T8) Polyclonal Antibody.



Western Blot analysis of VEC cells using Phospho-Smad2/3 (T8) Polyclonal Antibody.