

Phospho-MAPK1/MAPK3 (Y222/205) Antibody



PACO06169

Product Information

Size:

50ug

Reactivity:

Human, Mouse, Rat

Source:

Rabbit

Isotype:

IgG

Applications:

ELISA, WB

Recommended dilutions:

ELISA:1:10000, WB:1:500-1:2000

Protein Background:**Gene ID:**

MAPK1/MAPK3

Uniprot

P28482/P27361

Synonyms:

MAPK1; ERK2; PRKM1; PRKM2; Mitogen-activated protein kinase 1; MAP kinase 1; MAPK 1; ERT1; Extracellular signal-regulated kinase 2; ERK-2; MAP kinase isoform p42; p42-MAPK; Mitogen-activated protein kinase 2; MAP kinase 2; MAPK 2; MAPK3; ER

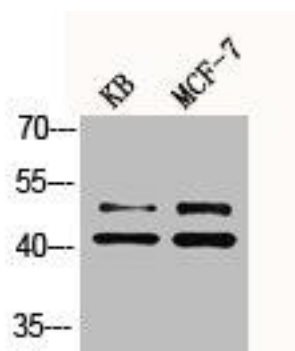
Immunogen:

Synthesized peptide derived from human ERK 1/2 around the phosphorylation site of Y222/205.

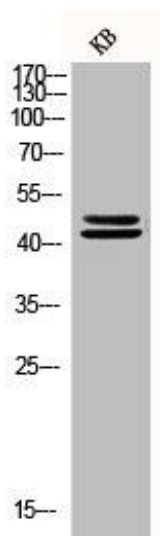
Storage:

Liquid in PBS containing 50% glycerol, 0.5% BSA and 0.02% sodium azide.

Product Images



Western Blot analysis of KB MCF7 cells using Phospho-ERK 1/2 (Y222/205) Polyclonal Antibody.



Western Blot analysis of KB cells using Phospho-ERK 1/2 (Y222/205) Polyclonal Antibody.