

Phospho-EPHB1/EPHB2 (Y594/604) Antibody



PACO06171

Product Information

Size:

50ug

Reactivity:

Human, Mouse, Rat

Source:

Rabbit

Isotype:

IgG

Applications:

ELISA, WB, IF

Recommended dilutions:

ELISA:1:5000, WB:1:500-1:2000, IF:1:200-1:1000

Protein Background:**Gene ID:**

EPHB1/EPHB2

Uniprot

P54762/P29323

Synonyms:

EPHB1; ELK; EPHT2; HEK6; NET; Ephrin type-B receptor 1; ELK; EPH tyrosine kinase 2; EPH-like kinase 6; EK6; hEK6; Neuronally-expressed EPH-related tyrosine kinase; NET; Tyrosine-protein kinase receptor EPH-2; EPHB2; DRT; EPHT3; EPTH3; ERK;

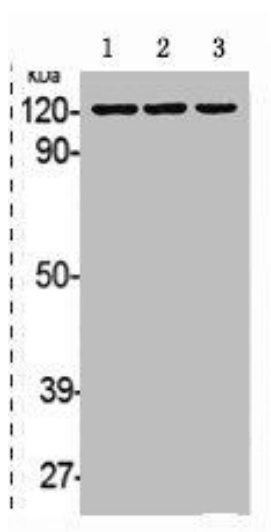
Immunogen:

Synthesized peptide derived from human EphB1/2 around the phosphorylation site of Y594/604.

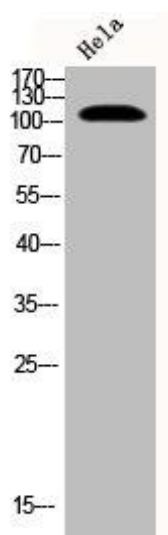
Storage:

Liquid in PBS containing 50% glycerol, 0.5% BSA and 0.02% sodium azide.

Product Images



Western Blot analysis of HELA A431 cells using Phospho-EphB1/2 (Y594/604) Polyclonal Antibody.



Western Blot analysis of HeLa cells using Phospho-EphB1/2 (Y594/604) Polyclonal Antibody.