

# Phospho-SMAD2 (S467) Antibody



PACO06173

---

## Product Information

**Size:**

50ug

**Reactivity:**

Human, Mouse, Rat

**Source:**

Rabbit

**Isotype:**

IgG

**Applications:**

ELISA, WB, IHC

**Recommended dilutions:**

ELISA:1:5000, WB:1:500-1:2000, IHC:1:100-1:300

**Protein Background:****Gene ID:**

SMAD2

**Uniprot**

Q15796

**Synonyms:**

SMAD2; MADH2; MADR2; Mothers against decapentaplegic homolog 2; MAD homolog 2; Mothers against DPP homolog 2; JV18-1; Mad-related protein 2; hMAD-2; SMAD family member 2; SMAD 2; Smad2; hSMAD2

**Immunogen:**

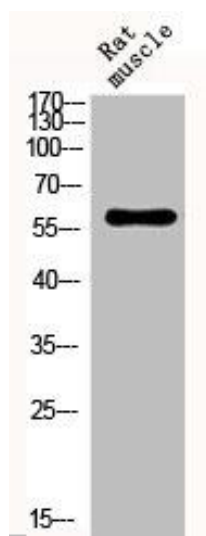
Synthesized peptide derived from human Smad2 around the phosphorylation site of S467.

**Storage:**

Liquid in PBS containing 50% glycerol, 0.5% BSA and 0.02% sodium azide.

## Product Images

---



Western Blot analysis of RAT-MUSCLE cells using Phospho-Smad2 (S467) Polyclonal Antibody.



Western Blot analysis of HepG2 cells using Phospho-Smad2 (S467) Polyclonal Antibody.