

Phospho-SMAD3 (S425) Antibody



PACO06174

Product Information

Size:

50ug

Reactivity:

Human, Mouse, Rat

Source:

Rabbit

Isotype:

IgG

Applications:

ELISA, WB, IHC

Recommended dilutions:

ELISA:1:40000, WB:1:500-1:2000,
IHC:1:100-1:300

Protein Background:**Gene ID:**

SMAD3

Uniprot

P84022

Synonyms:

SMAD3; MADH3; Mothers against decapentaplegic homolog 3; MAD homolog 3; Mad3; Mothers against DPP homolog 3; hMAD-3; JV15-2; SMAD family member 3; SMAD 3; Smad3; hSMAD3

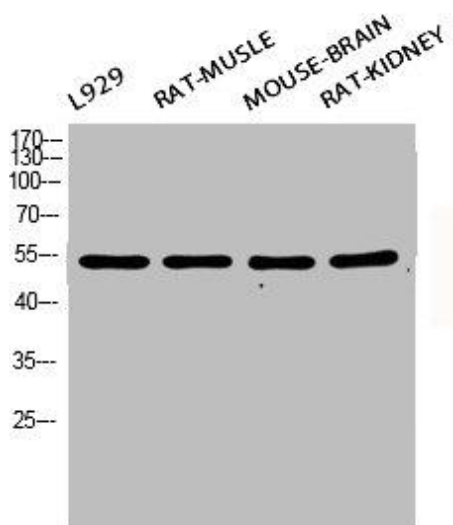
Immunogen:

Synthesized peptide derived from human Smad3 around the phosphorylation site of S425.

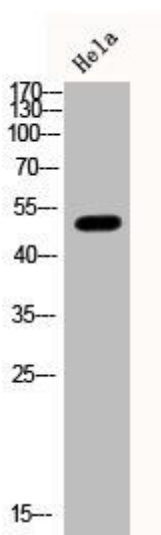
Storage:

Liquid in PBS containing 50% glycerol, 0.5% BSA and 0.02% sodium azide.

Product Images



Western Blot analysis of L929 RAT-MUSCLE MOUSE-BRAIN RAT-KIDNEY cells using Phospho-Smad3 (S425) Polyclonal Antibody.



Western Blot analysis of HELA cells using Phospho-Smad3 (S425) Polyclonal Antibody.