

Phospho-LYN (Y508) Antibody



PACO06176

Product Information

Size:

50ug

Reactivity:

Human, Mouse, Rat

Source:

Rabbit

Isotype:

IgG

Applications:

ELISA, WB, IHC

Recommended dilutions:

ELISA:1:10000, WB:1:500-1:2000,
IHC:1:100-1:300

Protein Background:**Gene ID:**

LYN

Uniprot

P07948

Synonyms:

LYN; JTK8; Tyrosine-protein kinase Lyn; Lck/Yes-related novel protein tyrosine kinase; V-yes-1 Yamaguchi sarcoma viral related oncogene homolog; p53Lyn; p56Lyn

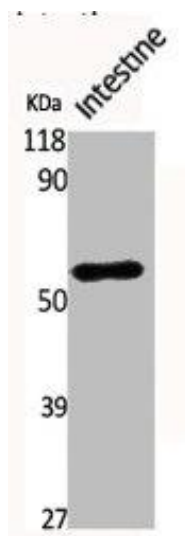
Immunogen:

Synthesized peptide derived from human Lyn around the phosphorylation site of Y508.

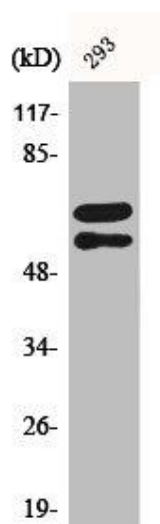
Storage:

Liquid in PBS containing 50% glycerol, 0.5% BSA and 0.02% sodium azide.

Product Images



Western Blot analysis of MOUSE-INTESTINE cells using Phospho-Lyn (Y508) Polyclonal Antibody.



Western Blot analysis of 293 cells using Phospho-Lyn (Y508) Polyclonal Antibody.