

# Phospho-SYK (Y348) Antibody



PACO06177

---

## Product Information

**Size:**

50ug

**Reactivity:**

Human, Mouse, Rat, Monkey

**Source:**

Rabbit

**Isotype:**

IgG

**Applications:**

ELISA, WB, IHC

**Recommended dilutions:**

ELISA:1:10000, WB:1:500-1:2000,  
IHC:1:100-1:300

**Protein Background:****Gene ID:**

SYK

**Uniprot**

P43405

**Synonyms:**

SYK; Tyrosine-protein kinase SYK; Spleen tyrosine kinase; p72-Syk

**Immunogen:**

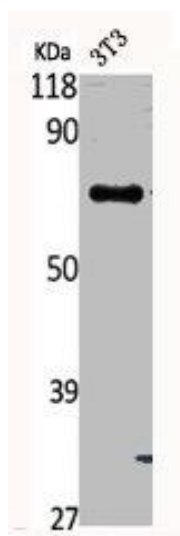
Synthesized peptide derived from human Syk around the phosphorylation site of Y348.

**Storage:**

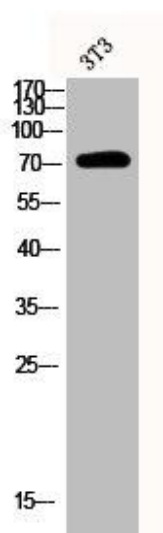
Liquid in PBS containing 50% glycerol, 0.5% BSA and 0.02% sodium azide.

## Product Images

---



Western Blot analysis of NIH-3T3 cells using Phospho-Syk (Y348) Polyclonal Antibody.



Western Blot analysis of 3T3 cells using Phospho-Syk (Y348) Polyclonal Antibody.