

# Phospho-FOS (S362) Antibody



PACO06178

---

## Product Information

**Size:**

50ug

**Reactivity:**

Human, Mouse, Rat

**Source:**

Rabbit

**Isotype:**

IgG

**Applications:**

ELISA, WB, IHC

**Recommended dilutions:**

ELISA:1:10000, WB:1:500-1:2000,  
IHC:1:100-1:300

**Protein Background:****Gene ID:**

FOS

**Uniprot**

P01100

**Synonyms:**

FOS; G0S7; Proto-oncogene c-Fos; Cellular oncogene fos; G0/G1 switch regulatory protein 7

**Immunogen:**

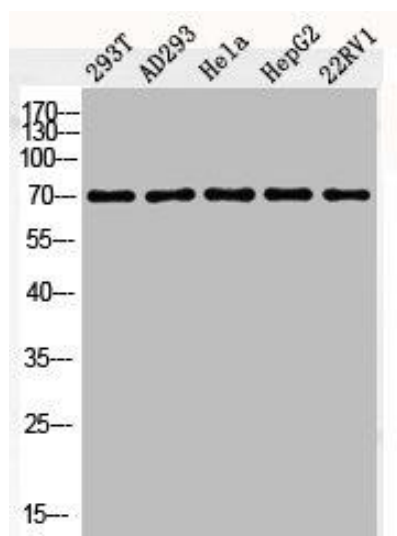
Synthesized peptide derived from human c-Fos around the phosphorylation site of S362.

**Storage:**

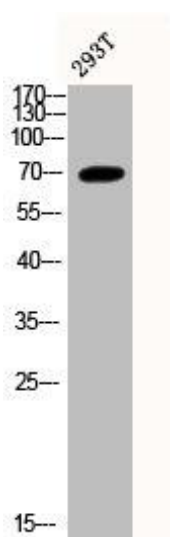
Liquid in PBS containing 50% glycerol, 0.5% BSA and 0.02% sodium azide.

## Product Images

---



Western Blot analysis of 293T AD293 HELA HepG2 22RV1 cells using Phospho-c-Fos (S362) Polyclonal Antibody.



Western Blot analysis of 293T cells using Phospho-c-Fos (S362) Polyclonal Antibody.