

# Phospho-SMAD3 (S208) Antibody



PACO06185

---

## Product Information

**Size:**

50ug

**Reactivity:**

Human, Mouse, Rat

**Source:**

Rabbit

**Isotype:**

IgG

**Applications:**

ELISA, WB, IHC

**Recommended dilutions:**

ELISA:1:10000, WB:1:500-1:2000,  
IHC:1:100-1:300

**Protein Background:**

**Gene ID:**

SMAD3

**Uniprot**

P84022

**Synonyms:**

SMAD3; MADH3; Mothers against decapentaplegic homolog 3; MAD homolog 3; Mad3; Mothers against DPP homolog 3; hMAD-3; JV15-2; SMAD family member 3; SMAD 3; Smad3; hSMAD3

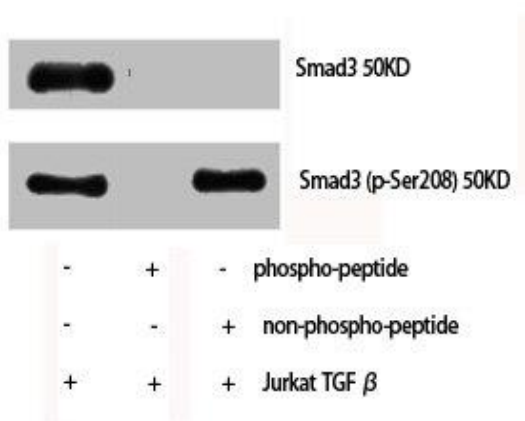
**Immunogen:**

Synthesized peptide derived from human Smad3 around the phosphorylation site of S208.

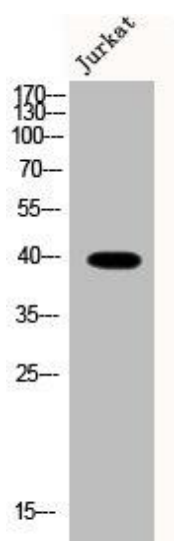
**Storage:**

Liquid in PBS containing 50% glycerol, 0.5% BSA and 0.02% sodium azide.

## Product Images



Western Blot analysis of Jurkat cells using Phospho-Smad3 (S208) Polyclonal Antibody.



Western Blot analysis of Jurkat cells using Phospho-Smad3 (S208) Polyclonal Antibody.