

Phospho-DUSP1/DUSP4 (S296/318) Antibody



PACO06189

Product Information

Size:

50ug

Reactivity:

Human, Mouse, Rat

Source:

Rabbit

Isotype:

IgG

Applications:

ELISA, WB, IHC

Recommended dilutions:

ELISA:1:5000, WB:1:500-1:2000, IHC:1:100-1:300

Protein Background:**Gene ID:**

DUSP1/DUSP4

Uniprot

P28562/Q13115

Synonyms:

DUSP1; CL100; MKP1; PTPN10; VH1; Dual specificity protein phosphatase 1; Dual specificity protein phosphatase hVH1; Mitogen-activated protein kinase phosphatase 1; MAP kinase phosphatase 1; MKP-1; Protein-tyrosine phosphatase CL100; DUSP4;

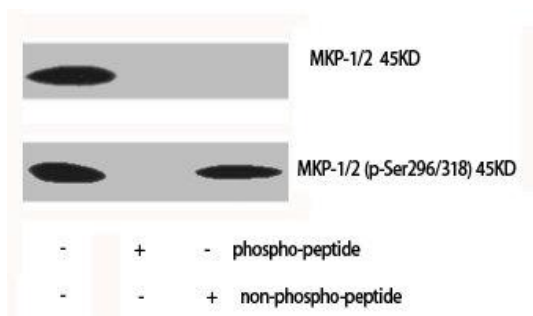
Immunogen:

Synthesized peptide derived from human MKP-1/2 around the phosphorylation site of S296/318.

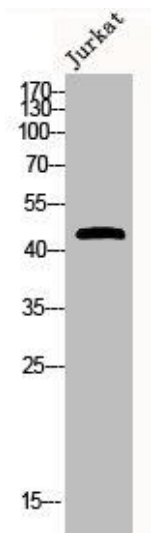
Storage:

Liquid in PBS containing 50% glycerol, 0.5% BSA and 0.02% sodium azide.

Product Images



Western Blot analysis of various cells using Phospho-MKP-1/2 (S296/318) Polyclonal Antibody.



Western Blot analysis of JK cells using Phospho-MKP-1/2 (S296/318) Polyclonal Antibody.