

# Phospho-CTTN (Y466) Antibody



PACO06190

---

## Product Information

**Size:**

50ug

**Reactivity:**

Human, Mouse, Rat, Monkey

**Source:**

Rabbit

**Isotype:**

IgG

**Applications:**

ELISA, WB, IHC, IF

**Recommended dilutions:**

ELISA:1:20000, WB:1:500-1:2000,  
IHC:1:100-1:300, IF:1:200-1:1000

**Protein Background:**

**Gene ID:**

CTTN

**Uniprot**

Q14247

**Synonyms:**

CTTN; EMS1; Src substrate cortactin; Amplexin; Oncogene EMS1

**Immunogen:**

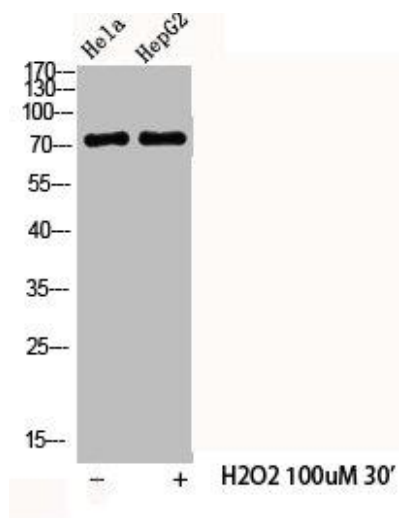
Synthesized peptide derived from human Cortactin around the phosphorylation site of Y466.

**Storage:**

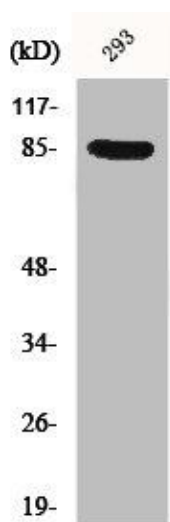
Liquid in PBS containing 50% glycerol, 0.5% BSA and 0.02% sodium azide.

## Product Images

---



Western Blot analysis of HELA HepG2 cells using Phospho-Cortactin (Y466) Polyclonal Antibody.



Western Blot analysis of 293 cells using Phospho-Cortactin (Y466) Polyclonal Antibody.