

# Phospho-RELA (S311) Antibody



PACO06191

---

## Product Information

**Size:**

50ug

**Reactivity:**

Human, Mouse

**Source:**

Rabbit

**Isotype:**

IgG

**Applications:**

ELISA, WB, IHC, IF

**Recommended dilutions:**

ELISA:1:40000, WB:1:500-1:2000,  
IHC:1:100-1:300, IF:1:200-1:1000

**Protein Background:****Gene ID:**

RELA

**Uniprot**

Q04206

**Synonyms:**

RELA; NFKB3; Transcription factor p65; Nuclear factor NF- $\kappa$ B; -B p65 subunit; Nuclear factor of  $\kappa$ B; light polypeptide gene enhancer in B-cells 3

**Immunogen:**

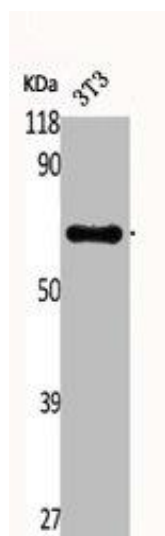
Synthesized peptide derived from human NF  $\kappa$ B; B-p65 around the phosphorylation site of S311.

**Storage:**

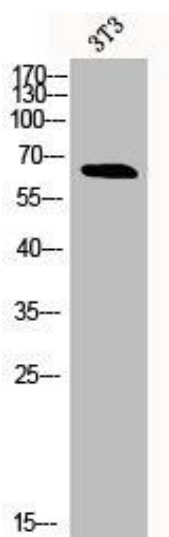
Liquid in PBS containing 50% glycerol, 0.5% BSA and 0.02% sodium azide.

## Product Images

---



Western Blot analysis of NIH-3T3 cells using Phospho-NF kappa B-p65 (S311) Polyclonal Antibody.



Western Blot analysis of 3T3 cells using Phospho-NF kappa B-p65 (S311) Polyclonal Antibody.