

Phospho-YWHAZ (S58) Antibody



PACO06193

Product Information

Size:

50ug

Reactivity:

Human, Mouse, Rat

Source:

Rabbit

Isotype:

IgG

Applications:

ELISA, WB, IHC, IF

Recommended dilutions:

ELISA:1:40000, WB:1:500-1:2000,
IHC:1:100-1:300, IF:1:200-1:1000

Protein Background:

Gene ID:

YWHAZ

Uniprot

P63104

Synonyms:

YWHAZ; 14-3-3 protein zeta/delta; Protein kinase C inhibitor protein 1; KCIP-1

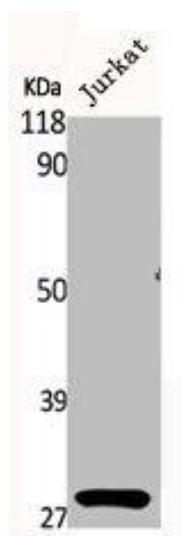
Immunogen:

Synthesized peptide derived from human 14-3-3 zeta around the phosphorylation site of S58.

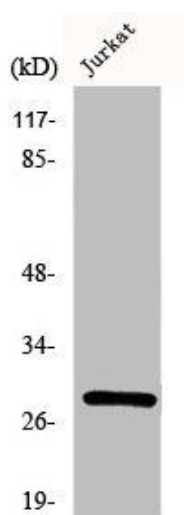
Storage:

Liquid in PBS containing 50% glycerol, 0.5% BSA and 0.02% sodium azide.

Product Images



Western Blot analysis of Jurkat cells using Phospho-14-3-3 zeta (S58) Polyclonal Antibody.



Western Blot analysis of Jurkat cells using Phospho-14-3-3 zeta (S58) Polyclonal Antibody.