

Phospho-MYC (S62) Antibody



PACO06196

Product Information

Size:

50ug

Reactivity:

Human, Mouse, Rat

Source:

Rabbit

Isotype:

IgG

Applications:

ELISA, WB, IHC, IF

Recommended dilutions:

ELISA:1:40000, WB:1:500-1:2000,
IHC:1:100-1:300, IF:1:200-1:1000

Protein Background:**Gene ID:**

MYC

Uniprot

P01106

Synonyms:

MYC; BHLHE39; Myc proto-oncogene protein; Class E basic helix-loop-helix protein 39; bHLHe39; Proto-oncogene c-Myc; Transcription factor p64

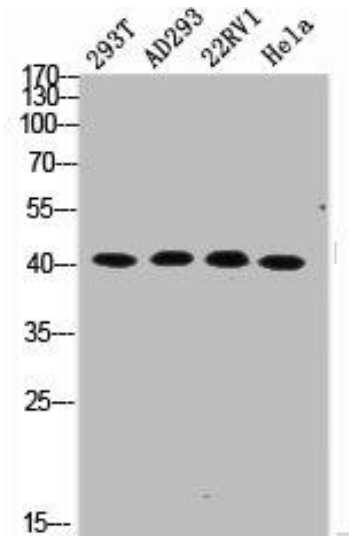
Immunogen:

Synthesized peptide derived from human c-Myc around the phosphorylation site of S62.

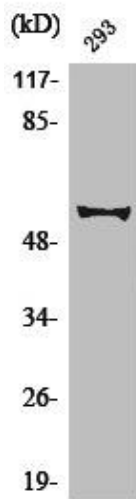
Storage:

Liquid in PBS containing 50% glycerol, 0.5% BSA and 0.02% sodium azide.

Product Images



Western Blot analysis of 293T AD293 22RV1 HELA cells using Phospho-c-Myc (S62) Polyclonal Antibody.



Western Blot analysis of 293 cells using Phospho-c-Myc (S62) Polyclonal Antibody.