

Phospho-CALD1 (S789) Antibody



PACO06199

Product Information

Size:

50ug

Reactivity:

Human, Mouse, Rat

Source:

Rabbit

Isotype:

IgG

Applications:

ELISA, WB, IHC, IF

Recommended dilutions:

ELISA:1:5000, WB:1:500-1:2000, IHC:1:100-1:300, IF:1:200-1:1000

Protein Background:

Gene ID:

CALD1

Uniprot

Q05682

Synonyms:

CALD1; CAD; CDM; Caldesmon; CDM

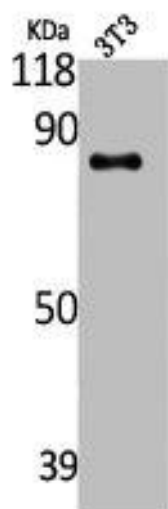
Immunogen:

Synthesized peptide derived from human Caldesmon around the phosphorylation site of S789.

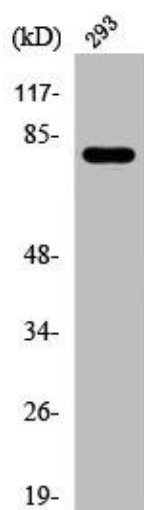
Storage:

Liquid in PBS containing 50% glycerol, 0.5% BSA and 0.02% sodium azide.

Product Images



Western Blot analysis of NIH-3T3 cells using Phospho-Caldesmon (S789) Polyclonal Antibody.



Western Blot analysis of 293 cells using Phospho-Caldesmon (S789) Polyclonal Antibody.