

# Phospho-OPRM1 (S375) Antibody



PACO06203

---

## Product Information

**Size:**

50ug

**Reactivity:**

Human, Mouse, Rat

**Source:**

Rabbit

**Isotype:**

IgG

**Applications:**

ELISA, WB, IHC

**Recommended dilutions:**

ELISA:1:20000, WB:1:500-1:2000,  
IHC:1:100-1:300

**Protein Background:****Gene ID:**

OPRM1

**Uniprot**

P35372

**Synonyms:**

OPRM1; MOR1; Mu-type opioid receptor; M-OR-1; MOR-1; Mu opiate receptor; Mu opioid receptor; MOP; hMOP

**Immunogen:**

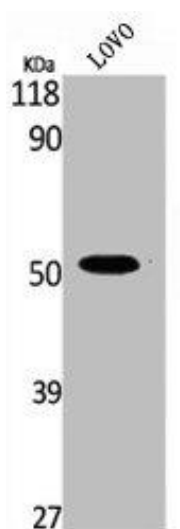
Synthesized peptide derived from human MOR-1 around the phosphorylation site of S375.

**Storage:**

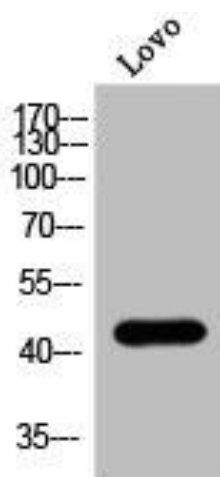
Liquid in PBS containing 50% glycerol, 0.5% BSA and 0.02% sodium azide.

## Product Images

---



Western Blot analysis of LOVO cells using Phospho-MOR-1 (S375) Polyclonal Antibody.



Western Blot analysis of Lovo cells using Phospho-MOR-1 (S375) Polyclonal Antibody.