

SRSF7 Antibody



PACO06210

Product Information

Size:

50ug

Reactivity:

Human, Mouse

Source:

Rabbit

Isotype:

IgG

Applications:

ELISA, WB, IHC

Recommended dilutions:

ELISA:1:40000, WB:1:500-1:2000,
IHC:1:100-1:300

Protein Background:**Gene ID:**

SRSF7

Uniprot

Q16629

Synonyms:

SRSF7; SFRS7; Serine/arginine-rich splicing factor 7; Splicing factor 9G8; Splicing factor; arginine/serine-rich 7

Immunogen:

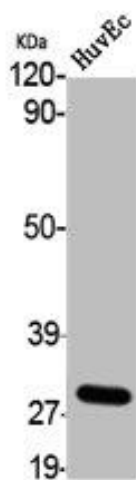
Synthesized peptide derived from the Internal region of human 9G8.

Storage:

Liquid in PBS containing 50% glycerol, 0.5% BSA and 0.02% sodium azide.

Product Images

Western Blot analysis of HuvEc cells using 9G8 Polyclonal Antibody.



Western Blot analysis of HuvEc cells using 9G8 Polyclonal Antibody.

