

ADCY1 Antibody



PACO06211

Product Information

Size:

50ug

Reactivity:

Human, Mouse

Source:

Rabbit

Isotype:

IgG

Applications:

ELISA, WB, IHC

Recommended dilutions:

ELISA:1:40000, WB:1:500-1:2000,
IHC:1:100-1:300

Protein Background:**Gene ID:**

ADCY1

Uniprot

Q08828

Synonyms:

ADCY1; Adenylate cyclase type 1; ATP pyrophosphate-lyase 1; Adenylate cyclase type I; Adenylyl cyclase 1; Ca(2+)/calmodulin-activated adenylyl cyclase

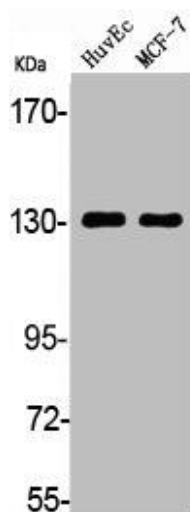
Immunogen:

Synthesized peptide derived from the Internal region of human A Cyclase I.

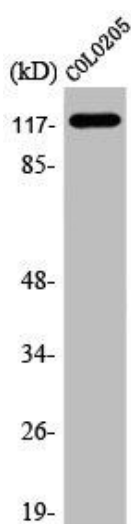
Storage:

Liquid in PBS containing 50% glycerol, 0.5% BSA and 0.02% sodium azide.

Product Images



Western Blot analysis of HuvEc MCF7 cells using A Cyclase I Polyclonal Antibody.



Western Blot analysis of COLO205 cells using A Cyclase I Polyclonal Antibody.