

ACTB/POTEKP/ACTG1 Antibody



PACO06227

Product Information

Size:

50ug

Reactivity:

Human, Mouse, Rat

Source:

Rabbit

Isotype:

IgG

Applications:

ELISA, WB, IHC

Recommended dilutions:

ELISA:1:10000, WB:1:500-1:2000,
IHC:1:100-1:300

Protein Background:**Gene ID:**

ACTB/POTEKP/ACTG1

Uniprot

P60709/Q9BYX7/P63261

Synonyms:

ACTB; Actin; cytoplasmic 1; beta-actin; POTEKP; ACTBL3; FKSG30; Putative beta-actin-like protein 3; κ-actin; POTE ankyrin domain family member K; ACTG1; ACTB; ACTG; Actin, cytoplasmic 2; gamma-actin

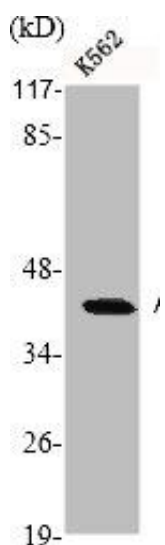
Immunogen:

Synthesized peptide derived from the C-terminal region of human Actin.

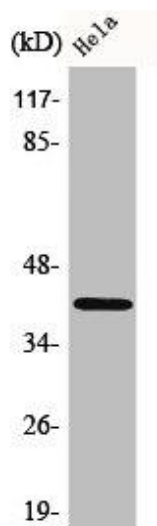
Storage:

Liquid in PBS containing 50% glycerol, 0.5% BSA and 0.02% sodium azide.

Product Images



Western Blot analysis of K562 cells using Actin Polyclonal Antibody.



Western Blot analysis of HeLa cells using Actin Polyclonal Antibody.