

ACTA1 Antibody



PACO06228

Product Information

Size:

50ug

Reactivity:

Human, Mouse, Rat

Source:

Rabbit

Isotype:

IgG

Applications:

ELISA, WB, IHC

Recommended dilutions:

ELISA:1:20000, WB:1:500-1:2000,
IHC:1:100-1:300

Protein Background:

Gene ID:

ACTA1

Uniprot

P68133

Synonyms:

ACTA1; ACTA; Actin; alpha skeletal muscle; alpha-actin-1

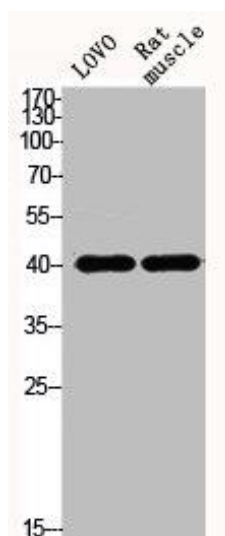
Immunogen:

Synthesized peptide derived from the N-terminal region of human Actin α 1.

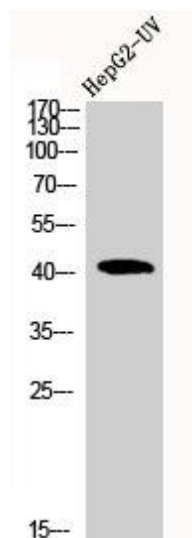
Storage:

Liquid in PBS containing 50% glycerol, 0.5% BSA and 0.02% sodium azide.

Product Images



Western Blot analysis of LOVO mouse-muscle cells using Actin alpha 1 Polyclonal Antibody.



Western Blot analysis of HEPG2-UV cells using Actin alpha 1 Polyclonal Antibody.