

# ACTG2 Antibody



PACO06229

---

## Product Information

**Size:**

50ug

**Reactivity:**

Human, Mouse, Rat

**Source:**

Rabbit

**Isotype:**

IgG

**Applications:**

ELISA, WB, IHC, IF

**Recommended dilutions:**

ELISA:1:20000, WB:1:500-1:2000,  
IHC:1:100-1:300, IF:1:200-1:1000

**Protein Background:**

**Gene ID:**

ACTG2

**Uniprot**

P63267

**Synonyms:**

ACTG2; ACTA3; ACTL3; ACTSG; Actin; gamma-enteric smooth muscle; alpha-actin-3; gamma-2-actin; Smooth muscle gamma-actin

**Immunogen:**

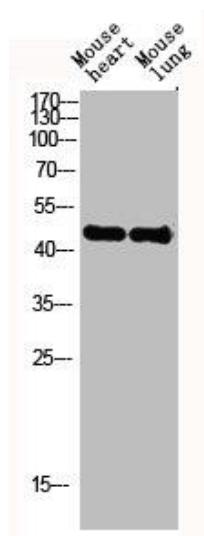
Synthesized peptide derived from the N-terminal region of human Actin &alpha; 3.

**Storage:**

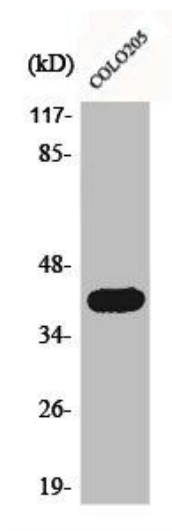
Liquid in PBS containing 50% glycerol, 0.5% BSA and 0.02% sodium azide.

## Product Images

---



Western Blot analysis of mouse-heart mouse-lung cells using Actin alpha 3 Polyclonal Antibody.



Western Blot analysis of COLO205 cells using Actin alpha 3 Polyclonal Antibody.