

ACTN2/ACTN3 Antibody



PACO06231

Product Information

Size:

50ug

Reactivity:

Human, Mouse, Rat

Source:

Rabbit

Isotype:

IgG

Applications:

ELISA, WB, IHC, IF

Recommended dilutions:

ELISA:1:20000, WB:1:500-1:2000,
IHC:1:100-1:300, IF:1:200-1:1000

Protein Background:

Gene ID:

ACTN2/ACTN3

Uniprot

P35609/Q08043

Synonyms:

ACTN2; alpha-actinin-2; alpha-actinin skeletal muscle isoform 2; F-actin cross-linking protein; ACTN3; alpha-actinin-3; alpha-actinin skeletal muscle isoform 3; F-actin cross-linking protein

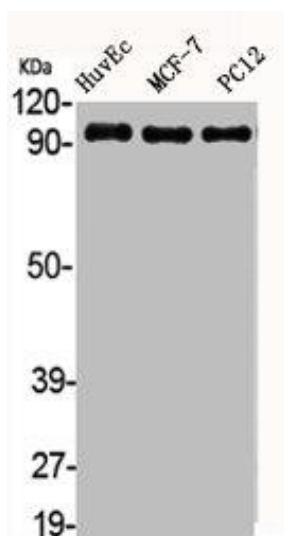
Immunogen:

Synthesized peptide derived from the N-terminal region of human Actinin- α 2/3.

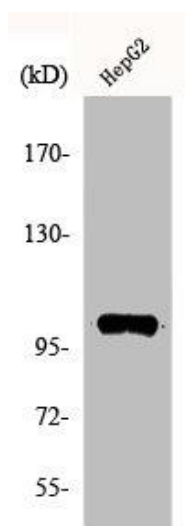
Storage:

Liquid in PBS containing 50% glycerol, 0.5% BSA and 0.02% sodium azide.

Product Images



Western Blot analysis of HuvEc MCF7 PC12 cells using Actinin- α 2/3 Polyclonal Antibody.



Western Blot analysis of HuvEc cells using Actinin- α 2/3 Polyclonal Antibody.