

ADD1/ADD2 Antibody



PACO06234

Product Information

Size:

50ug

Reactivity:

Human, Mouse, Rat

Source:

Rabbit

Isotype:

IgG

Applications:

ELISA, WB, IHC, IF, IP

Recommended dilutions:

ELISA:1:40000, WB:1:500-1:2000,
IHC:1:100-1:300, IP:2-5ug, IF:1:200-1:1000,

Protein Background:**Gene ID:**

ADD1/ADD2

Uniprot

P35611/P35612

Synonyms:

ADD1; ADDA; alpha-adducin; Erythrocyte adducin subunit alpha; ADD2; ADDB; beta-adducin; Erythrocyte adducin subunit beta

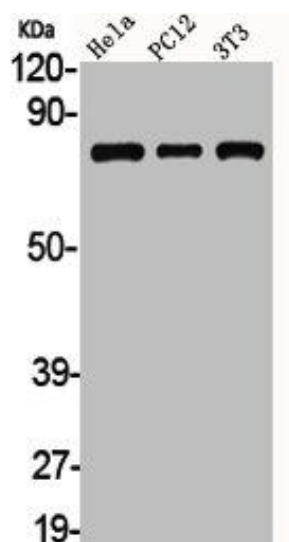
Immunogen:

Synthesized peptide derived from human Adducin α / β around the non-phosphorylation site of S726/713.

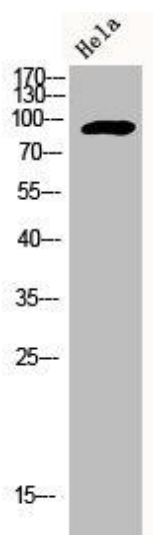
Storage:

Liquid in PBS containing 50% glycerol, 0.5% BSA and 0.02% sodium azide.

Product Images



Western Blot analysis of HELA PC12 NIH-3T3 cells using Adducin alpha / beta Polyclonal Antibody.



Western Blot analysis of HELA cells using Adducin alpha / beta Polyclonal Antibody.