

ADORA3 Antibody



PACO06237

Product Information

Size:

50ug

Reactivity:

Human

Source:

Rabbit

Isotype:

IgG

Applications:

ELISA, WB, IHC, IF

Recommended dilutions:

ELISA:1:5000, WB:1:500-1:2000, IHC:1:100-1:300, IF:1:200-1:1000

Protein Background:

Gene ID:

ADORA3

Uniprot

P33765

Synonyms:

ADORA3; Adenosine receptor A3

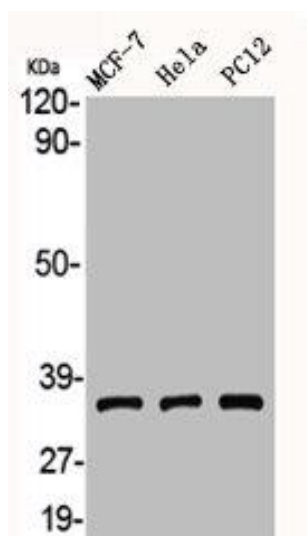
Immunogen:

Synthesized peptide derived from the C-terminal region of human Adenosine A3-R.

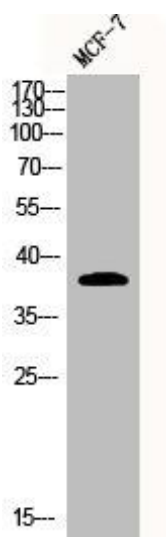
Storage:

Liquid in PBS containing 50% glycerol, 0.5% BSA and 0.02% sodium azide.

Product Images



Western Blot analysis of MCF7 HELA PC12 cells using Adenosine A3-R Polyclonal Antibody.



Western Blot analysis of MCF7 cells using Adenosine A3-R Polyclonal Antibody.