

AIM2 Antibody



PACO06240

Product Information

Size:

50ug

Reactivity:

Human

Source:

Rabbit

Isotype:

IgG

Applications:

ELISA, WB, IHC, IF

Recommended dilutions:

ELISA:1:40000, WB:1:500-1:2000,
IHC:1:100-1:300, IF:1:200-1:1000

Protein Background:

Gene ID:

AIM2

Uniprot

O14862

Synonyms:

AIM2; Interferon-inducible protein AIM2; Absent in melanoma 2

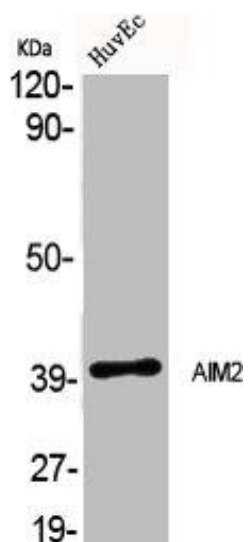
Immunogen:

Synthesized peptide derived from the Internal region of human AIM2.

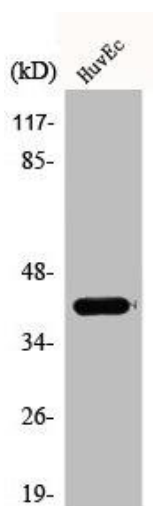
Storage:

Liquid in PBS containing 50% glycerol, 0.5% BSA and 0.02% sodium azide.

Product Images



Western Blot analysis of HuvEc cells using AIM2 Polyclonal Antibody.



Western Blot analysis of HuvEc cells using AIM2 Polyclonal Antibody.