

AKAP8 Antibody



PACO06241

Product Information

Size:

50ug

Reactivity:

Human, Mouse, Rat

Source:

Rabbit

Isotype:

IgG

Applications:

ELISA, WB, IHC, IF

Recommended dilutions:

ELISA:1:20000, WB:1:500-1:2000,
IHC:1:100-1:300, IF:1:200-1:1000

Protein Background:**Gene ID:**

AKAP8

Uniprot

O43823

Synonyms:

AKAP8; AKAP95; A-kinase anchor protein 8; AKAP-8; A-kinase anchor protein 95 kDa;
AKAP 95

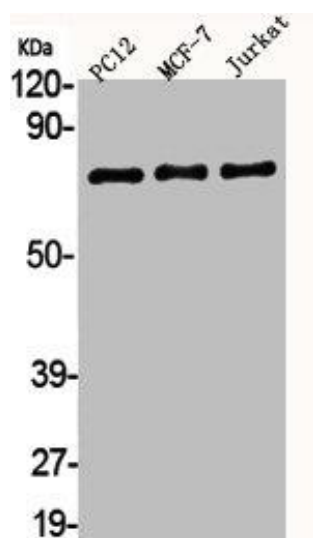
Immunogen:

Synthesized peptide derived from the Internal region of human AKAP 95.

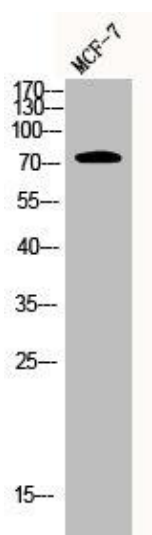
Storage:

Liquid in PBS containing 50% glycerol, 0.5% BSA and 0.02% sodium azide.

Product Images



Western Blot analysis of PC12 MCF7 Jurkat cells using AKAP 95 Polyclonal Antibody.



Western Blot analysis of MCF7 cells using AKAP 95 Polyclonal Antibody.