

# AKT2 Antibody



PACO06244

---

## Product Information

**Size:**

50ug

**Reactivity:**

Human, Mouse, Rat

**Source:**

Rabbit

**Isotype:**

IgG

**Applications:**

ELISA, WB, IHC, IF

**Recommended dilutions:**

ELISA:1:10000, WB:1:500-1:2000,  
IHC:1:100-1:300, IF:1:200-1:1000

**Protein Background:****Gene ID:**

AKT2

**Uniprot**

P31751

**Synonyms:**

AKT2; RAC-beta serine/threonine-protein kinase; Protein kinase Akt-2; Protein kinase B beta; PKB beta; RAC-PK-beta

**Immunogen:**

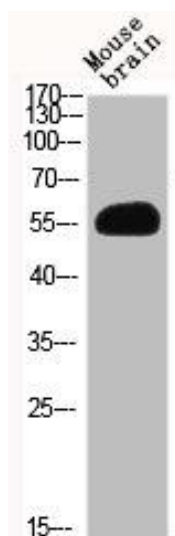
Synthesized peptide derived from human Akt2 around the non-phosphorylation site of S474.

**Storage:**

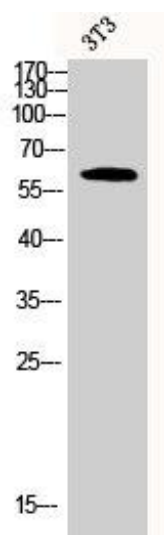
Liquid in PBS containing 50% glycerol, 0.5% BSA and 0.02% sodium azide.

## Product Images

---



Western Blot analysis of MOUSE-BRAIN cells using Akt2 Polyclonal Antibody.



Western Blot analysis of 3T3 cells using Akt2 Polyclonal Antibody.