

SLC25A12 Antibody



PACO06260

Product Information

Size:

50ug

Reactivity:

Human

Source:

Rabbit

Isotype:

IgG

Applications:

ELISA, WB, IHC

Recommended dilutions:

ELISA:1:20000, WB:1:500-1:2000,
IHC:1:100-1:300

Protein Background:

Gene ID:

SLC25A12

Uniprot

O75746

Synonyms:

SLC25A12; ARALAR1; Calcium-binding mitochondrial carrier protein Aralar1; Mitochondrial aspartate glutamate carrier 1; Solute carrier family 25 member 12

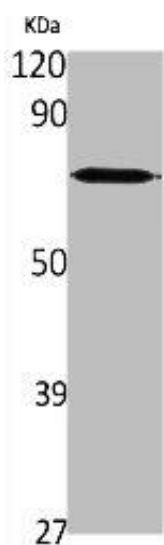
Immunogen:

Synthesized peptide derived from the Internal region of human ARALAR.

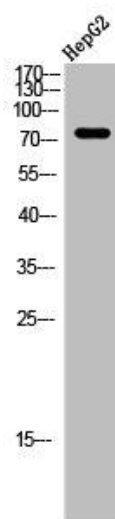
Storage:

Liquid in PBS containing 50% glycerol, 0.5% BSA and 0.02% sodium azide.

Product Images



Western Blot analysis of various cells using ARALAR Polyclonal Antibody.



Western Blot analysis of HEPG2 cells using ARALAR Polyclonal Antibody.