

# ARMCX1 Antibody



PACO06262

---

## Product Information

**Size:**

50ug

**Reactivity:**

Human

**Source:**

Rabbit

**Isotype:**

IgG

**Applications:**

ELISA, WB, IHC, IF

**Recommended dilutions:**

ELISA:1:20000, WB:1:500-1:2000,  
IHC:1:100-1:300, IF:1:200-1:1000

**Protein Background:****Gene ID:**

ARMCX1

**Uniprot**

Q9P291

**Synonyms:**

ARMCX1; ALEX1; AD032; Armadillo repeat-containing X-linked protein 1; ARM protein lost in epithelial cancers on chromosome X 1; Protein ALEX1

**Immunogen:**

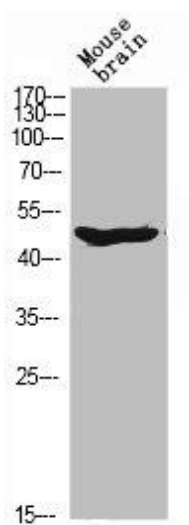
Synthesized peptide derived from the N-terminal region of human ARM CX1.

**Storage:**

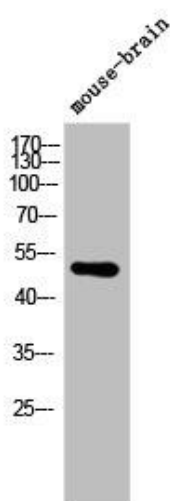
Liquid in PBS containing 50% glycerol, 0.5% BSA and 0.02% sodium azide.

## Product Images

---



Western Blot analysis of MOUSE-BRAIN cells using ARM CX1 Polyclonal Antibody.



Western Blot analysis of mouse-brain cells using ARM CX1 Polyclonal Antibody.