

ARMCX2 Antibody



PACO06263

Product Information

Size:

50ug

Reactivity:

Human, Mouse, Rat

Source:

Rabbit

Isotype:

IgG

Applications:

ELISA, WB, IHC, IF

Recommended dilutions:

ELISA:1:20000, WB:1:500-1:2000,
IHC:1:100-1:300, IF:1:200-1:1000

Protein Background:

Gene ID:

ARMCX2

Uniprot

Q7L311

Synonyms:

ARMCX2; ALEX2; KIAA0512; Armadillo repeat-containing X-linked protein 2; ARM protein lost in epithelial cancers on chromosome X 2; Protein ALEX2

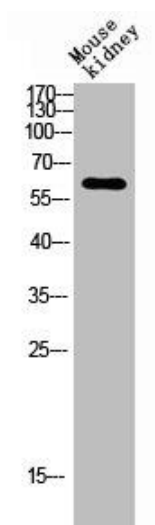
Immunogen:

Synthesized peptide derived from the Internal region of human ARM CX2.

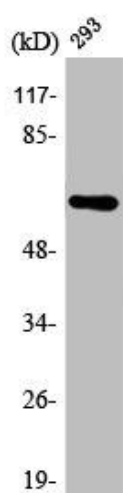
Storage:

Liquid in PBS containing 50% glycerol, 0.5% BSA and 0.02% sodium azide.

Product Images



Western blot analysis of Mouse-kidney lysis using ARM CX2 antibody.



Western Blot analysis of 293 cells using ARM CX2 Polyclonal Antibody.