

# ADRB2 Antibody



PACO06266

---

## Product Information

**Size:**

50ug

**Reactivity:**

Human, Mouse, Rat

**Source:**

Rabbit

**Isotype:**

IgG

**Applications:**

ELISA, WB, IHC, IF

**Recommended dilutions:**

ELISA:1:20000, WB:1:500-1:2000,  
IHC:1:100-1:300, IF:1:200-1:1000

**Protein Background:**

**Gene ID:**

ADRB2

**Uniprot**

P07550

**Synonyms:**

ADRB2; ADRB2R; B2AR; beta-2 adrenergic receptor; beta-2 adrenoreceptor; beta-2 adrenoceptor

**Immunogen:**

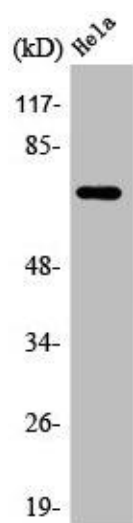
Synthesized peptide derived from the Internal region of human AR- &beta; 2.

**Storage:**

Liquid in PBS containing 50% glycerol, 0.5% BSA and 0.02% sodium azide.

## Product Images

---



Western Blot analysis of HeLa cells using AR- beta 2 Polyclonal Antibody.