

# BCL2 Antibody



PACO06282

---

## Product Information

**Size:**

50ug

**Reactivity:**

Human, Monkey

**Source:**

Rabbit

**Isotype:**

IgG

**Applications:**

ELISA, WB, IHC

**Recommended dilutions:**

ELISA:1:10000, WB:1:500-1:2000,  
IHC:1:100-1:300

**Protein Background:**

**Gene ID:**

BCL2

**Uniprot**

P10415

**Synonyms:**

BCL2; Apoptosis regulator Bcl-2

**Immunogen:**

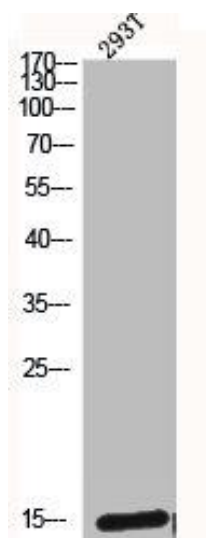
Synthesized peptide derived from human Bcl-2 around the non-phosphorylation site of S70.

**Storage:**

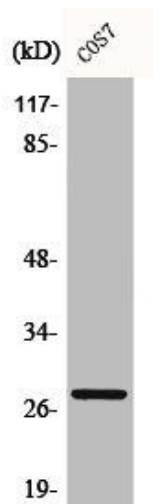
Liquid in PBS containing 50% glycerol, 0.5% BSA and 0.02% sodium azide.

## Product Images

---



Western Blot analysis of 293T cells using Bcl-2 Polyclonal Antibody.



Western Blot analysis of COS7 cells using Bcl-2 Polyclonal Antibody.