

BMP8A Antibody



PACO06293

Product Information

Size:

50ug

Reactivity:

Human

Source:

Rabbit

Isotype:

IgG

Applications:

ELISA, WB, IHC, IF

Recommended dilutions:

ELISA:1:20000, WB:1:500-1:2000,
IHC:1:100-1:300, IF:1:200-1:1000

Protein Background:

Gene ID:

BMP8A

Uniprot

Q7Z5Y6

Synonyms:

BMP8A; Bone morphogenetic protein 8A; BMP-8A

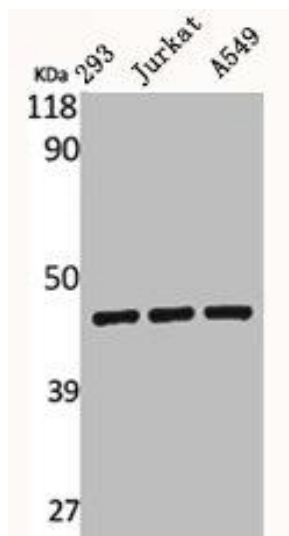
Immunogen:

Synthesized peptide derived from the C-terminal region of human BMP-8A.

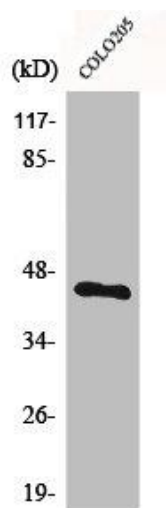
Storage:

Liquid in PBS containing 50% glycerol, 0.5% BSA and 0.02% sodium azide.

Product Images



Western Blot analysis of 293 Jurkat A549 cells using BMP-8A Polyclonal Antibody.



Western Blot analysis of COLO205 cells using BMP-8A Polyclonal Antibody.