

BNIP2 Antibody



PACO06294

Product Information

Size:

50ug

Reactivity:

Human, Mouse

Source:

Rabbit

Isotype:

IgG

Applications:

ELISA, WB, IHC

Recommended dilutions:

ELISA:1:40000, WB:1:500-1:2000,
IHC:1:100-1:300

Protein Background:**Gene ID:**

BNIP2

Uniprot

Q12982

Synonyms:

BNIP2; NIP2; BCL2/adenovirus E1B 19 kDa protein-interacting protein 2

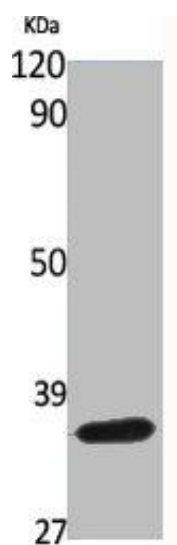
Immunogen:

Synthesized peptide derived from the Internal region of human BNIP-2.

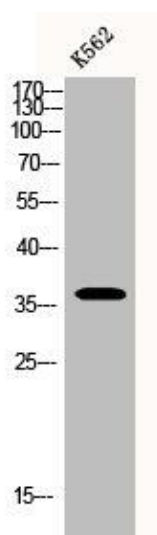
Storage:

Liquid in PBS containing 50% glycerol, 0.5% BSA and 0.02% sodium azide.

Product Images



Western Blot analysis of various cells using BNIP-2 Polyclonal Antibody.



Western Blot analysis of K562 cells using BNIP-2 Polyclonal Antibody.