

BRS3 Antibody



PACO06300

Product Information

Size:

50ug

Reactivity:

Human

Source:

Rabbit

Isotype:

IgG

Applications:

ELISA, WB, IF

Recommended dilutions:

ELISA:1:40000, WB:1:500-1:2000, IF:1:200-1:1000

Protein Background:

Gene ID:

BRS3

Uniprot

P32247

Synonyms:

BRS3; Bombesin receptor subtype-3; BRS-3

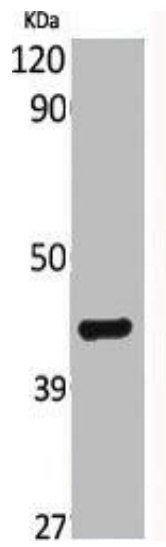
Immunogen:

Synthesized peptide derived from the Internal region of human BRS-3.

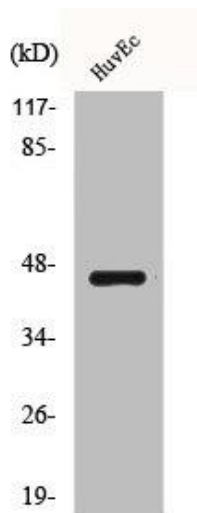
Storage:

Liquid in PBS containing 50% glycerol, 0.5% BSA and 0.02% sodium azide.

Product Images



Western Blot analysis of various cells using BRS-3 Polyclonal Antibody.



Western Blot analysis of HuvEc cells using BRS-3 Polyclonal Antibody.