

# C9 Antibody



PACO06307

---

## Product Information

**Size:**

50ug

**Reactivity:**

Human

**Source:**

Rabbit

**Isotype:**

IgG

**Applications:**

ELISA, WB

**Recommended dilutions:**

ELISA:1:40000, WB:1:500-1:2000

**Protein Background:**

**Gene ID:**

C9

**Uniprot**

P02748

**Synonyms:**

C9; Complement component C9

**Immunogen:**

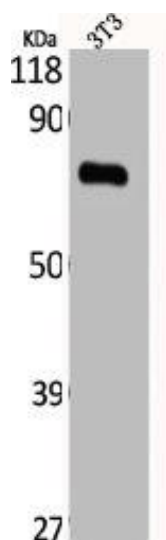
Synthesized peptide derived from the Internal region of human C9.

**Storage:**

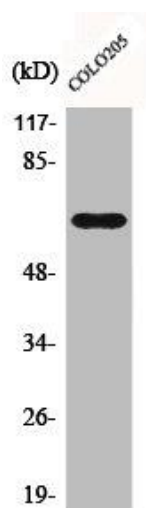
Liquid in PBS containing 50% glycerol, 0.5% BSA and 0.02% sodium azide.

## Product Images

---



Western Blot analysis of NIH-3T3 cells using C9 Polyclonal Antibody.



Western Blot analysis of COLO205 cells using C9 Polyclonal Antibody.