

# ABL1 Antibody



PACO06309

---

## Product Information

**Size:**

50ug

**Reactivity:**

Human, Mouse, Rat, Monkey

**Source:**

Rabbit

**Isotype:**

IgG

**Applications:**

ELISA, WB, IHC

**Recommended dilutions:**

ELISA:1:5000, WB:1:500-1:2000, IHC:1:100-1:300

**Protein Background:****Gene ID:**

ABL1

**Uniprot**

P00519

**Synonyms:**

ABL1; ABL; JTK7; Tyrosine-protein kinase ABL1; Abelson murine leukemia viral oncogene homolog 1; Abelson tyrosine-protein kinase 1; Proto-oncogene c-Abl; p150

**Immunogen:**

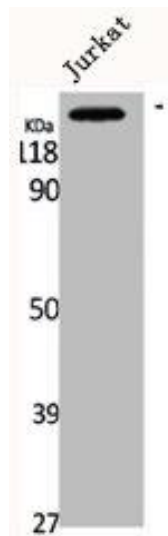
Synthesized peptide derived from human Abl1 around the non-phosphorylation site of Y204.

**Storage:**

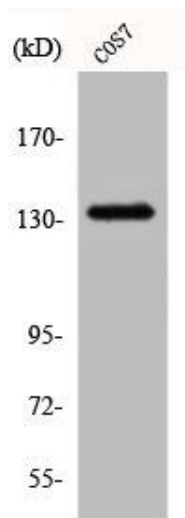
Liquid in PBS containing 50% glycerol, 0.5% BSA and 0.02% sodium azide.

## Product Images

---



Western Blot analysis of Jurkat cells using Abl1 Polyclonal Antibody.



Western Blot analysis of COS7 cells using Abl1 Polyclonal Antibody.