

# CTNNB1 Antibody



PACO06320

---

## Product Information

**Size:**

50ug

**Reactivity:**

Human, Mouse, Rat, Monkey

**Source:**

Rabbit

**Isotype:**

IgG

**Applications:**

ELISA, WB, IHC, IF

**Recommended dilutions:**

ELISA:1:20000, WB:1:500-1:2000,  
IHC:1:100-1:300, IF:1:200-1:1000

**Protein Background:**

**Gene ID:**

CTNNB1

**Uniprot**

P35222

**Synonyms:**

CTNNB1; CTNNB; OK/SW-cl.35; Catenin beta-1; beta-catenin

**Immunogen:**

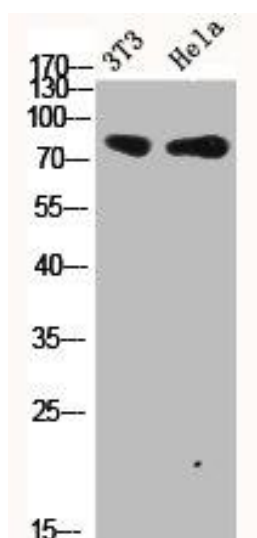
Synthesized peptide derived from human Catenin- &beta; around the non-phosphorylation site of S33.

**Storage:**

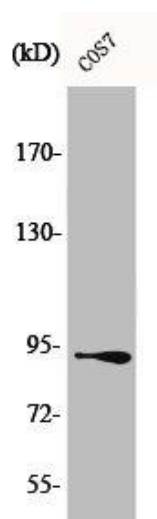
Liquid in PBS containing 50% glycerol, 0.5% BSA and 0.02% sodium azide.

## Product Images

---



Western Blot analysis of NIH-3T3 HELA cells using Catenin- beta Polyclonal Antibody.



Western Blot analysis of COS7 cells using Catenin- beta Polyclonal Antibody.