

CDC20 Antibody



PACO06334

Product Information

Size:

50ug

Reactivity:

Human, Mouse, Rat

Source:

Rabbit

Isotype:

IgG

Applications:

ELISA, WB, IHC

Recommended dilutions:

ELISA:1:20000, WB:1:500-1:2000,
IHC:1:100-1:300

Protein Background:

Gene ID:

CDC20

Uniprot

Q12834

Synonyms:

CDC20; Cell division cycle protein 20 homolog; p55CDC

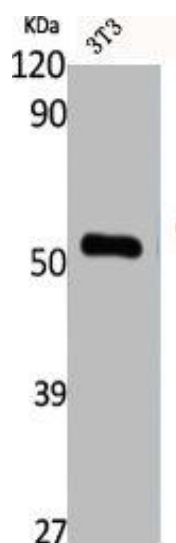
Immunogen:

Synthesized peptide derived from the Internal region of human Cdc20.

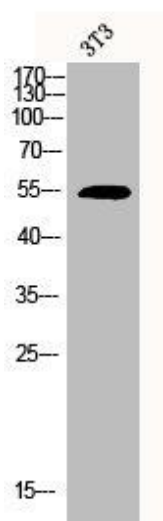
Storage:

Liquid in PBS containing 50% glycerol, 0.5% BSA and 0.02% sodium azide.

Product Images



Western Blot analysis of NIH-3T3 cells using Cdc20 Polyclonal Antibody.



Western Blot analysis of 3T3 cells using Cdc20 Polyclonal Antibody.