

CLCN6 Antibody



PACO06355

Product Information

Size:

50ug

Reactivity:

Human, Mouse, Rat, Monkey

Source:

Rabbit

Isotype:

IgG

Applications:

ELISA, WB

Recommended dilutions:

ELISA:1:40000, WB:1:500-1:2000

Protein Background:

Gene ID:

CLCN6

Uniprot

P51797

Synonyms:

CLCN6; KIAA0046; Chloride transport protein 6; Chloride channel protein 6; CIC-6

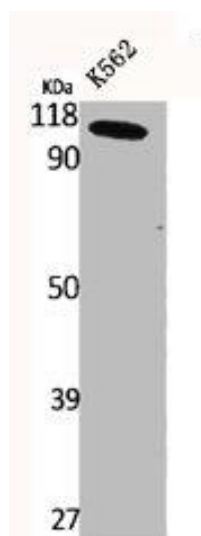
Immunogen:

Synthesized peptide derived from the Internal region of human CLC-6.

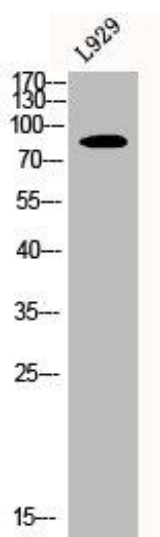
Storage:

Liquid in PBS containing 50% glycerol, 0.5% BSA and 0.02% sodium azide.

Product Images



Western Blot analysis of K562 cells using CLC-6 Polyclonal Antibody.



Western Blot analysis of L929 cells using CLC-6 Polyclonal Antibody.