

# MAF Antibody



PACO06362

---

## Product Information

**Size:**

50ug

**Reactivity:**

Human, Mouse, Rat

**Source:**

Rabbit

**Isotype:**

IgG

**Applications:**

ELISA, WB

**Recommended dilutions:**

ELISA:1:10000, WB:1:500-1:2000

**Protein Background:**

**Gene ID:**

MAF

**Uniprot**

O75444

**Synonyms:**

MAF; Transcription factor Maf; Proto-oncogene c-Maf; V-maf musculoaponeurotic fibrosarcoma oncogene homolog

**Immunogen:**

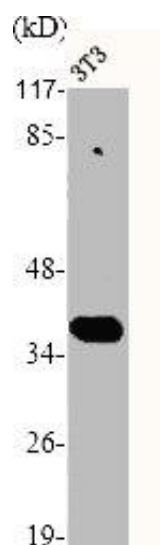
Synthesized peptide derived from the C-terminal region of human c-Maf.

**Storage:**

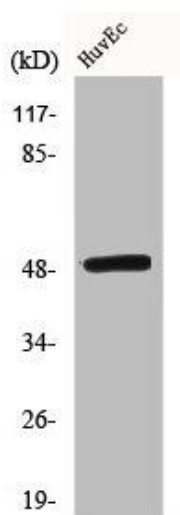
Liquid in PBS containing 50% glycerol, 0.5% BSA and 0.02% sodium azide.

## Product Images

---



Western Blot analysis of NIH-3T3 cells using c-Maf Polyclonal Antibody.



Western Blot analysis of COLO205 cells using c-Maf Polyclonal Antibody.