

PACO06379

Product Information

Size:

50ug

Reactivity:

Human, Mouse, Rat

Source:

Rabbit

Isotype:

IgG

Applications:

ELISA, WB, IHC

Recommended dilutions:

ELISA:1:20000, WB:1:500-1:2000,
IHC:1:100-1:300

Protein Background:**Gene ID:**

CSK

Uniprot

P41240

Synonyms:

CSK; Tyrosine-protein kinase CSK; C-Src kinase; Protein-tyrosine kinase CYL

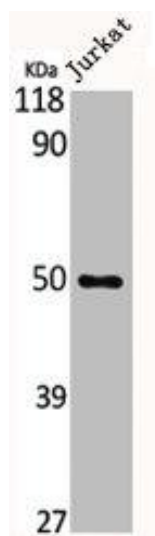
Immunogen:

Synthesized peptide derived from human Csk around the non-phosphorylation site of S364.

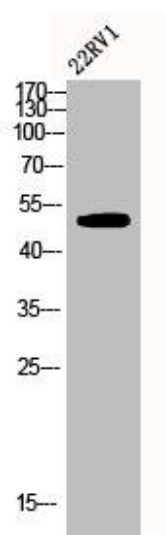
Storage:

Liquid in PBS containing 50% glycerol, 0.5% BSA and 0.02% sodium azide.

Product Images



Western Blot analysis of Jurkat cells using Csk Polyclonal Antibody.



Western Blot analysis of 22RV1 cells using Csk Polyclonal Antibody.